

Fire Safety

College of Dental Medicine



Fire Safety Officer
Environmental Health and Safety

Training Outline

- RACE & PASS
- Using a Fire Extinguisher
- Types of Fire Extinguishers
- If You or Someone Catches on Fire
- Reminders

RACE

RESCUE

- Not just yourself!
- People with special needs
- People in immediate area

ALARM

- Manual Alarm Station located by exits
- Notify occupants as you leave
- Listen for instructions
- Call Public Safety 212-305-7979

In Case of Fire:

Rescue

Alarm

Confine

Extinguish / **E**vacuate



To use Fire Extinguisher:

Pull Pin

Aim Hose

Squeeze Handle

Sweep From Side to Side



RACE

CONFINE

- Close all doors and windows as you leave
- Leave unlocked if possible
- Keep fire, smoke, odor in room of origin

EVACUATION

- Use closest stairway
- Know your way out!
- If needed, shelter in place



Using a Fire Extinguisher



Types of Fire Extinguishers

Dry Chemical



Co2



Water



TYPES OF FIRES

CLASS A ORDINARY COMBUSTIBLES:
wood, paper, rubber,
fabrics and many plastics



CLASS B FLAMMABLE LIQUIDS & GASES:
gasoline, oils, paint,
lacquer and tar



CLASS C FIRES INVOLVING
LIVE ELECTRICAL
EQUIPMENT



TYPES OF EXTINGUISHERS

CLASS A



CLASS A:B



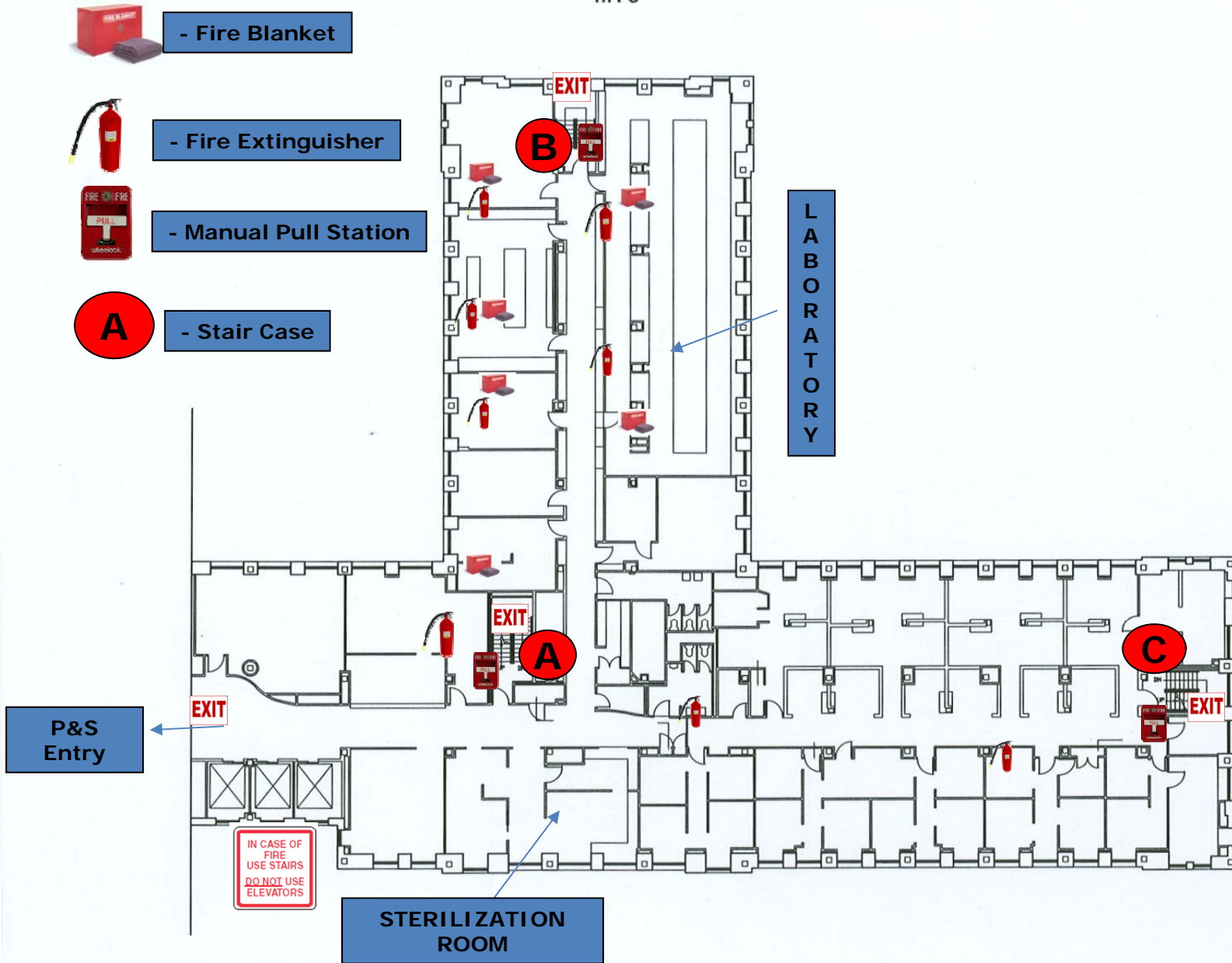
CLASS A:B:C



CLASS A:C



VANDERBILT CLINIC
flr: 8



If You or Someone Catches on Fire...

- **STOP DROP** and **ROLL**
- Do what you can to get the person down to the ground
- Use water from the sink and/or wet towel
- Use the fire extinguisher

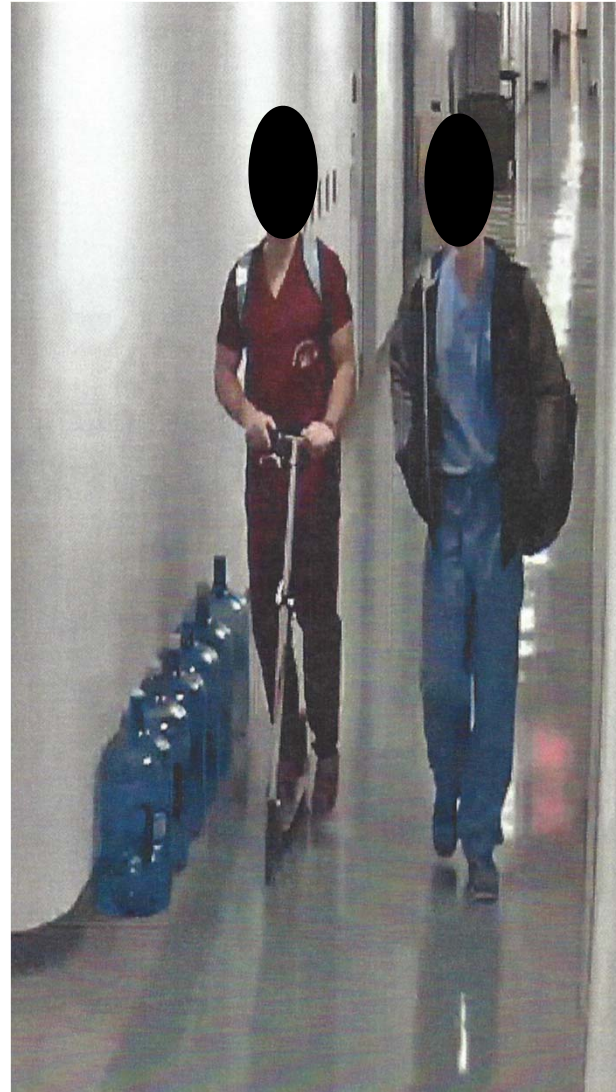


Open Flame Safety

9

- If you use a Bunsen Burner, remember these safety tips
 - Secure loose clothing and long hair
 - Remove flammable or combustible liquids, gases and materials from the area of the open flame
 - Ensure that there are no combustible or other materials that can ignite above the open flame
 - Be knowledgeable of the equipment you are using
 - NEVER leave an open flame unattended

If You See Something, Say Something!



Reminder:

Columbia University Medical Center is Smoke-Free!



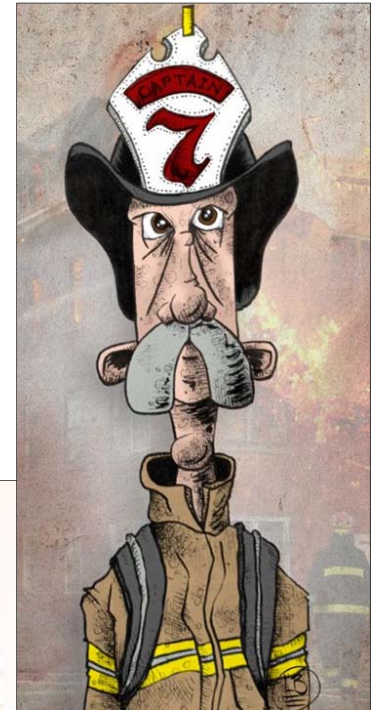
Fire Safety Staff

Fire-Life@columbia.edu

Harry Oster, CFPS, CFI
Manager of Fire and Life Safety
hjo2104@columbia.edu

Andrew J Patterson
Fire Safety Officer
ajp2225@columbia.edu

Jon Paul Aponte
Associate Fire Safety Officer
ja3165@columbia.edu



Thank you!

