

Fire Safety

College of Dental Medicine



Fire Safety Officer
Environmental Health and Safety

Training Outline

- RACE & PASS
- Using a Fire Extinguisher
- Types of Fire Extinguishers
- If You or Someone Catches on Fire
- Butane Torches
- Reminders

RACE

RESCUE

- Not just yourself!
- People with special needs
- People in immediate area

ALARM

- Manual Alarm Station located by exits
- Notify occupants as you leave
- Listen for instructions
- Call Public Safety 212-305-7979

In Case of Fire:

Rescue

Alarm

Confine

Extinguish / **E**vacuate



To use Fire Extinguisher:

Pull Pin

Aim Hose

Squeeze Handle

Sweep From Side to Side



RACE

CONFINE

- Close all doors and windows as you leave
- Leave unlocked if possible
- Keep fire, smoke, odor in room of origin

EVACUATION

- Use closest stairway
- Know your way out!
- If needed, shelter in place



Using a Fire Extinguisher



Types of Fire Extinguishers

Dry Chemical



Co2



Water



TYPES OF FIRES

CLASS A ORDINARY COMBUSTIBLES:
wood, paper, rubber,
fabrics and many plastics



CLASS B FLAMMABLE LIQUIDS & GASES:
gasoline, oils, paint,
lacquer and tar



CLASS C FIRES INVOLVING
LIVE ELECTRICAL
EQUIPMENT



TYPES OF EXTINGUISHERS

CLASS A



CLASS A:B



CLASS A:B:C



CLASS A:C



VANDERBILT CLINIC
flr: 8



- Fire Blanket



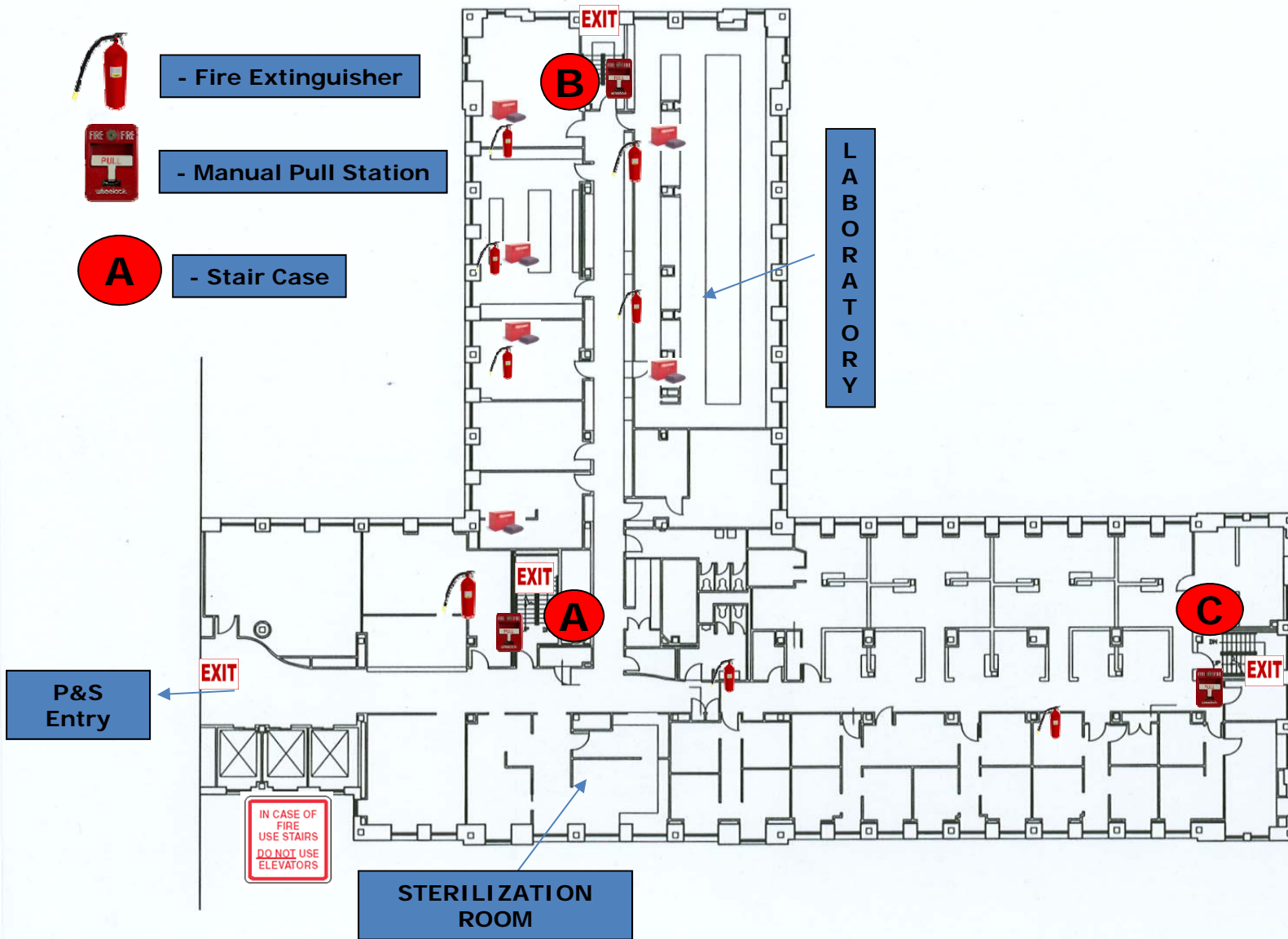
- Fire Extinguisher



- Manual Pull Station



- Stair Case



If You or Someone Catches on Fire...

- **STOP DROP** and **ROLL**
- Do what you can to get the person down to the ground
- Use water from the sink and/or wet towel
- Use the fire extinguisher



Butane Torches

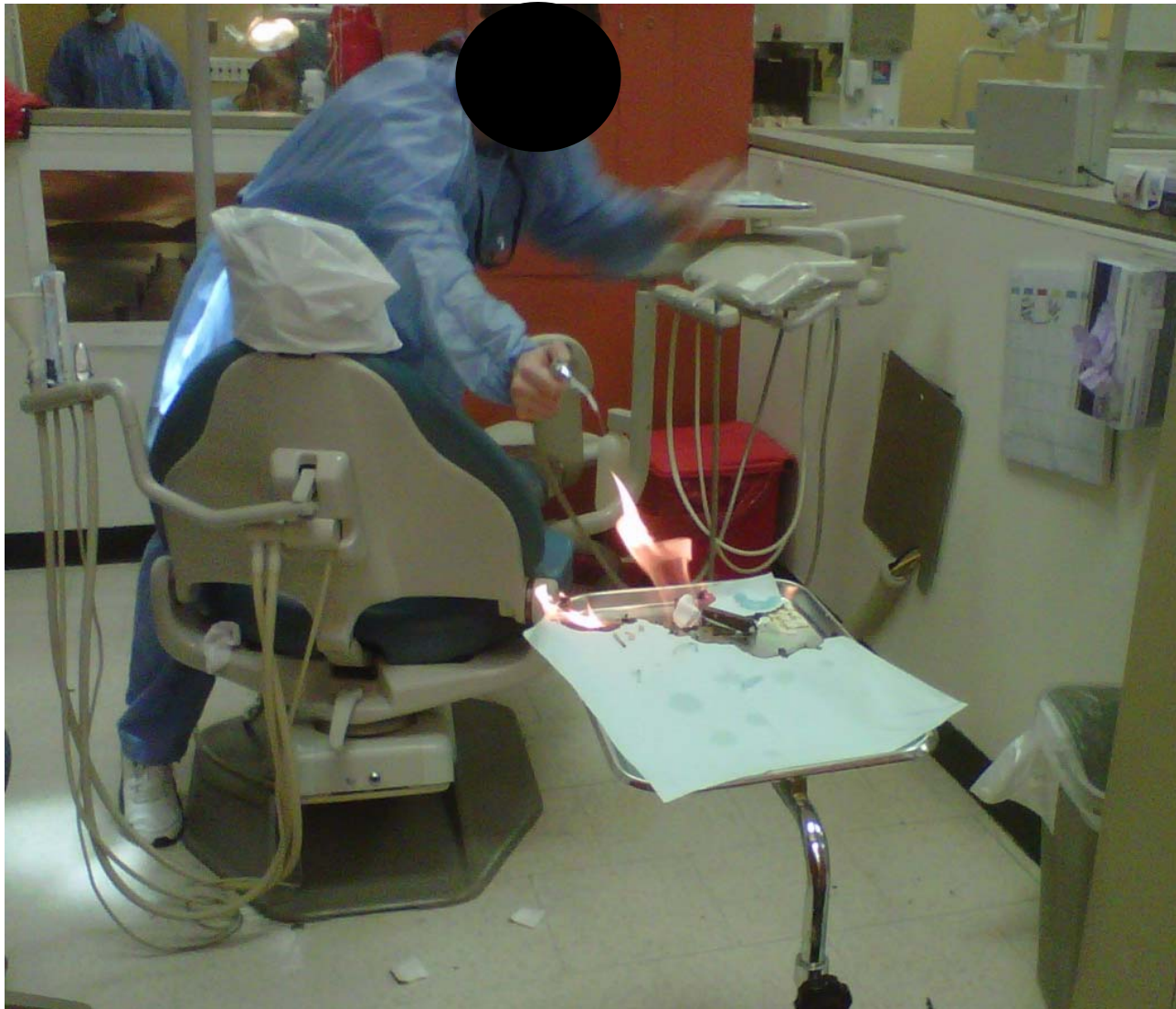
Authorized Personnel List for Filling Butane Torches

PURPOSE: Butane torches are ONLY to be filled by the personnel on this list. Torches should be filled by the “Primary” list first. If a person from the “Primary” list is not available someone from the “Secondary” list may fill empty butane torches.

AS OF FEBRUARY 2017: Personnel on this list have been properly trained in filling butane torches

	First	Last	Work Location
Primary	Eduardo	Gutierrez	VC8
	Omi	Khan	VC8
Backup	Shelby	Rodriguez	VC7
	Roxanne	Morgan	VC7
	Tiffany	Rosario	VC8
	Jon	Morgan	VC8
	<u>Deseree</u>	Vazquez	VC8
	Evelyn	Milord	VC8
	Elizabeth	Delarosa	VC9
	Millie	Martinez	VC9

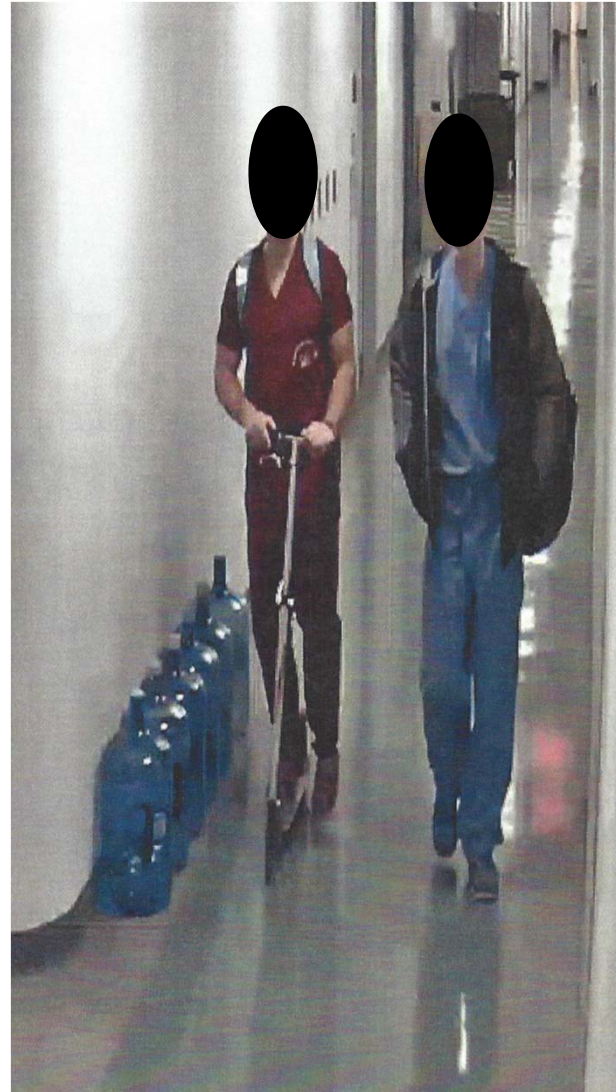
What's Wrong With This Picture?



This is what we want to prevent!



If You See Something, Say Something!



Reminder:

Columbia University Medical Center is Smoke-Free!



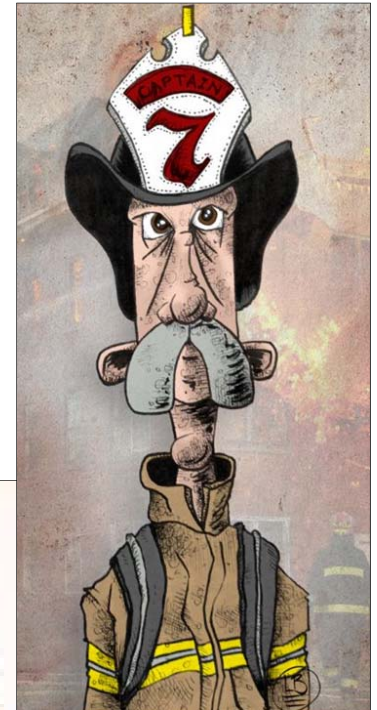
Fire Safety Staff

Fire-Life@columbia.edu

Harry Oster, CFPS, CFI
Manager of Fire and Life Safety
hjo2104@columbia.edu

Andrew J Patterson
Fire Safety Officer
ajp2225@columbia.edu

Jon Paul Aponte
Associate Fire Safety Officer
ja3165@columbia.edu



Thank you!

