

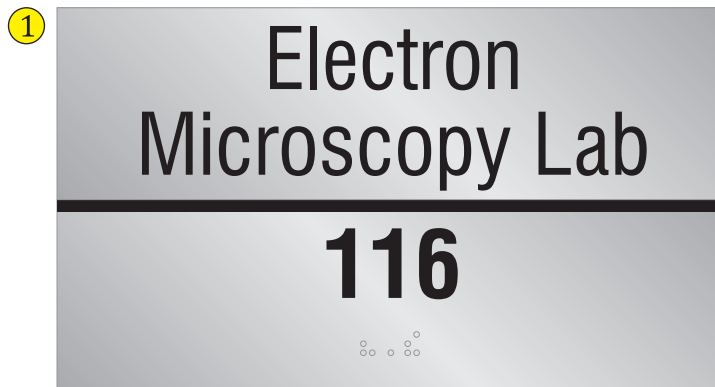


New Plaque Here
53"W Wall
Recommended 60" to Center

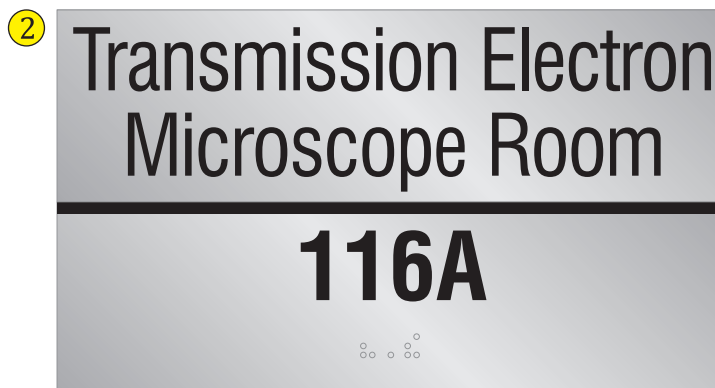
Approved 11/25/14
Project Name: TEM Lab
Work Order#:
Department#:
Project#:
Site#:
Status: In Production
Estimated Install Date: week of 12/22/14

Plaque - Qty. 1
10"H x 36"W x 1/4"Thick
Brushed Aluminum Plaque
3"H Engraved and Black Paint-Filled Text
Stud Mounting
Font: Helvetica Bold

**ELECTRON
MICROSCOPY**

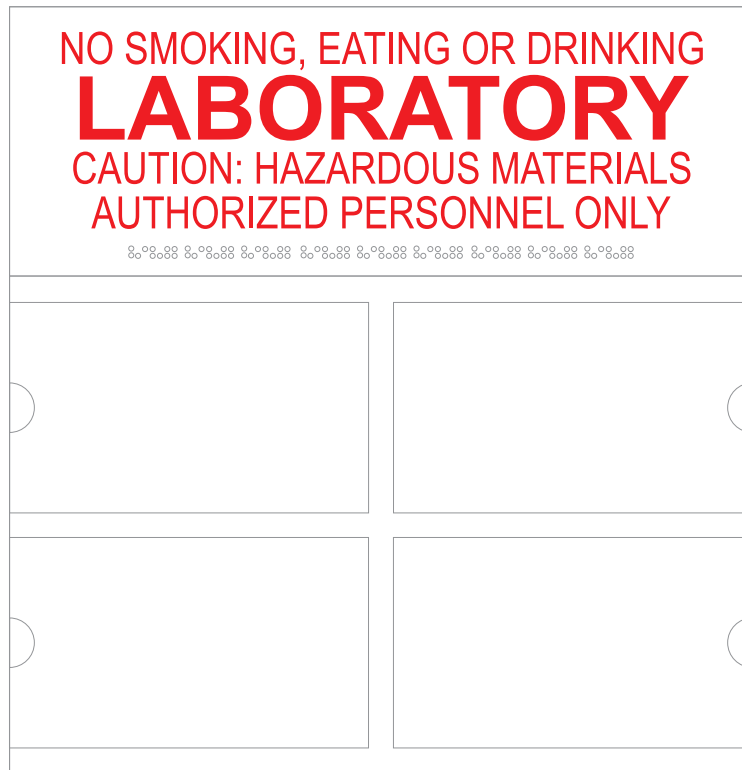


(install on right wall at entrance - 10.5"W)



CUF-1 (Qty. 3)

4"H x 7"W x 1/4" Thick Frame
with Satin Aluminum Laminate
and Painted Returns to Match
Header: 5/8"H Black Direct-Print Text
Footer: 3/4"H Black Raised ADA Characters
and Silver Braille
5/8"H Black Direct-Print Text
Double-Faced Tape / Silicone Mounting
Insert Font: Helvetica Condensed
ADA: Helvetica Condensed Bold

**Lab Sign (Qty. 2)**

15.5"H x 15"W

White Acrylic Frame

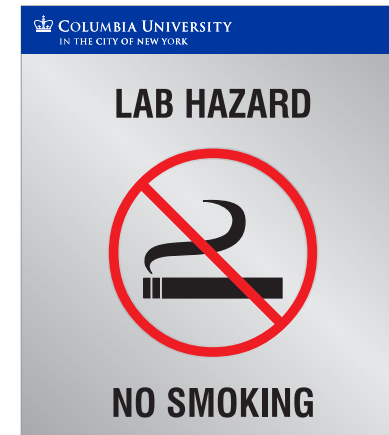
5/8"H and 1.25"H Red ADA Characters
and Clear Grade II Braille on Header

4.25"H x 7.5"W Windows

with Thumbnotch on Face

Double-Faced Tape / Silicone Mounting

(Qty. 1)



(Qty. 1)

**Info Sign (Qty. 2, 1-No Smoking, 1-No Food)**

9"H x 8"W x 1/8"Thick

Brushed Aluminum

with Direct-Printed Graphics

and Backsprayed Red

Double-Faced Tape / Silicone Mounting

Confirm Mounting Location

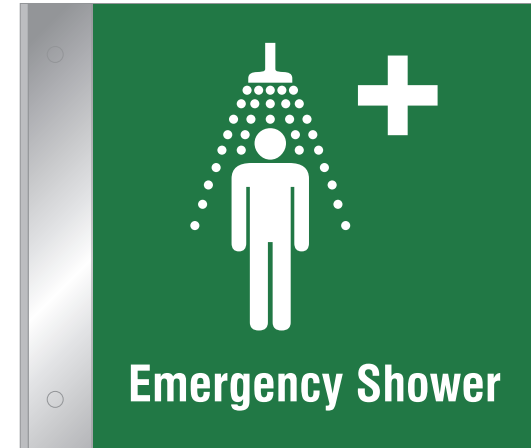
Confirm Mounting Location



Confirm Mounting Location



Confirm Mounting Location

**Perpendicular Safety Signs (Qty. 3 - 1 of each)**

7"H x 7"W

Painted Acrylic

with White Vinyl Text / Graphics

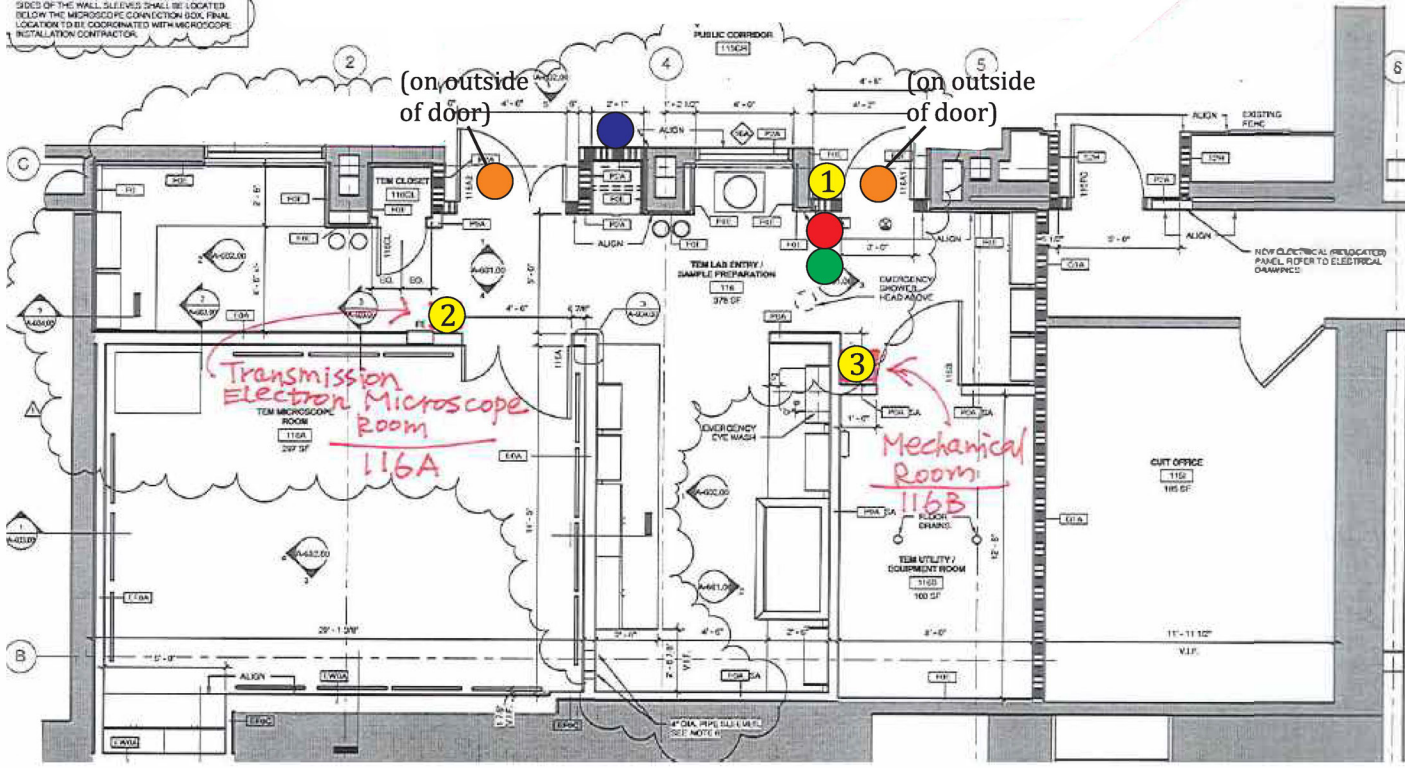
Silver Perpendicular Bracket

Screw and Anchor Mounting

5. WHEN NEW WALLS GO AROUND ANY DUCTWORK PROVIDE A MIN. 1" ACCESSIONAL SLANT JOINT AND MAKE SURE WALL ACCESSORIES ARE NOT IN DIRECT CONTACT (DO NOT TOUCH DUCTWORK OR DUCTWORK SUPPORTS, TRIP SCORERS WITH NEW DRAWINGS) FOR DUCTWORK INSULATION ETC.

6. CONTRACTOR SHALL FURNISH AND INSTALL (2) TWO 4" DIA. PVC PIPE SLEEVES THRU THE WALL. SLEEVES SHALL HAVE 1/4" PLATES ON BOTH SIDES OF THE WALL. SLEEVES SHALL BE LOCATED BELOW THE MICROSCOPE CONNECTION BOX. FINAL LOCATION TO BE COORDINATED WITH MICROSCOPE INSTALLATION CONTRACTOR.

LABORATORY WORKBENCHES



- Suite ID Plaque
- Lab Hazard
- Room ID's
- No Food or Drink
- No Smoking
- Safety Signs
(confirm location
1-Fire Extinguisher
1-Eye Wash
1-Emergency Shower)
- Hazard Signage