



CUIMC AI GOVERNANCE

February 2026

Agenda

- Timeline
- AI Governance Committee and AI Working Group membership
- Research AI Review Protocol
 - Workflow
 - IRB/Rascal
 - AIWG/AIGC
- Q&A

CUIMC IT AIGC Timeline

- **Jan 2025** CUIMC IT AIGC convened with representation from CUIMC IT leadership
- **May-Dec 2025** Expanded membership to include representation from Research, Clinical, Privacy, IRB, CUIT.
- **Oct 2025** CUIMC IT AIGC Charter v1.0 adopted
- **Nov 2025** AI Working Group established.
- **Feb 2026** Finalize AI questions updates for Rascal
- **Q2 2026 (est.)** Incorporate the new questions into Rascal

CUIMC IT AI Governance Committee

- Jim Bossio (CMC IT, CIO)
- Steve Erde (CMC IT, CTO)
- Emechete Ejike (CMC IT, CISO)
- Edward Huang (CMC IT)
- Namita Azad (CMC IT)
- Michael Faucher (CMC IT)
- Soumitra Sengupta (CMC IT, DBMI)
- Noemie Elhadad (Chair, DBMI, AI@VP&S)
- Timothy J. Crimmins (CMIO)
- Karen Pagliaro-Meyer (Privacy)
- *Ashley Halinski (IRB)
- *Brenda Ruotolo (IRB)
- *Maneesha Aggarwal (CUIT)
- *Basem Aly (CUIT)

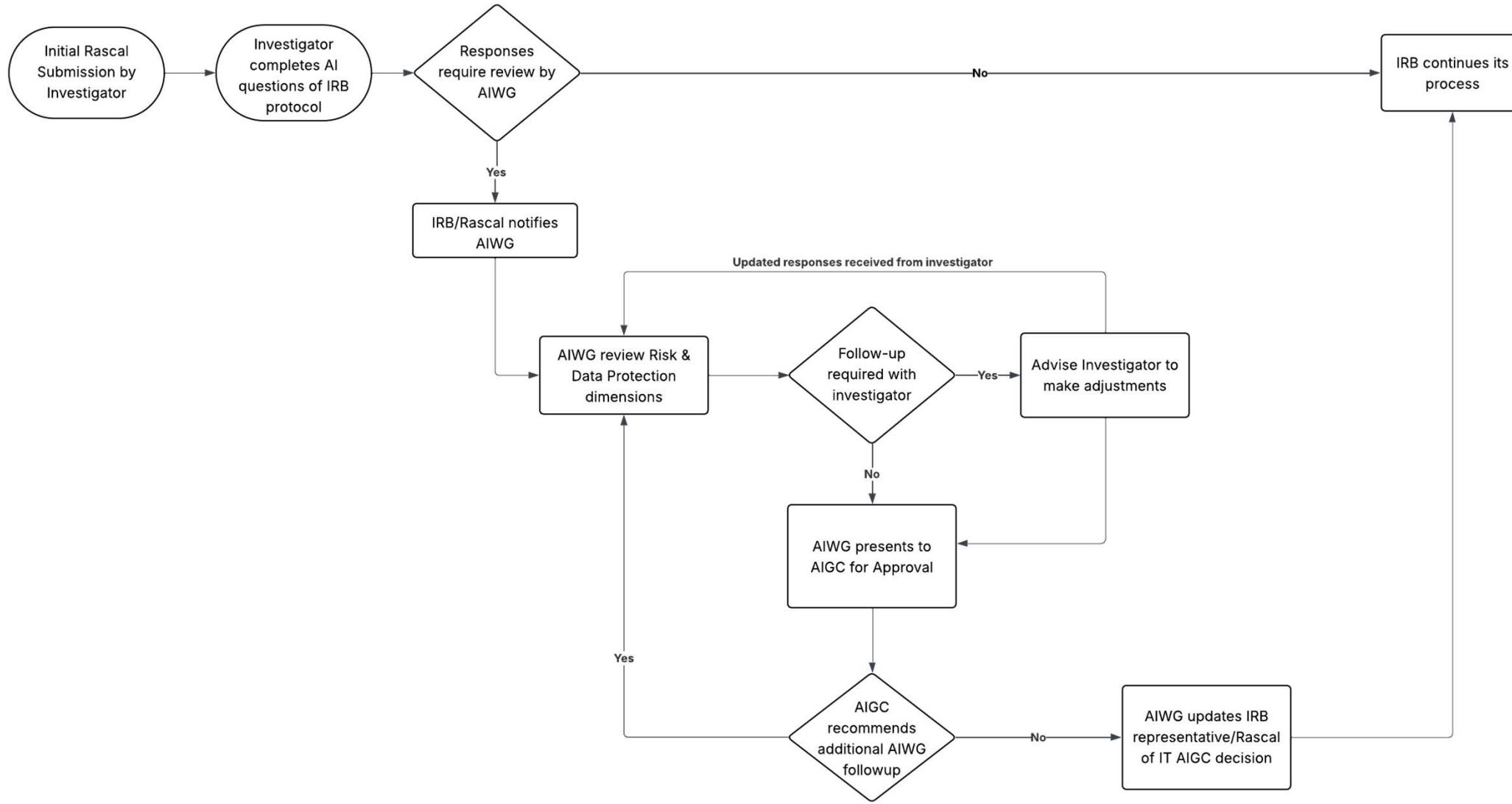
*Non-voting member

CUIMC IT AI Working Group

- Emechete Ejike (CMC IT, CISO)
- Edward Huang (CMC IT)
- Namita Azad (CMC IT)
- Michael Faucher (CMC IT)
- Alicia Hatfield (CMC IT)
- Sergio Manzanera (CMC IT, PMO)

Research Protocol

AI for Research



IRB/Rascal AI Questions

Procedures

- Does this study involve the use of Artificial Intelligence (AI) or Machine Learning (ML) in any part of the research activities (e.g., data analysis, decision support, participant interaction, etc.)?
 - Please identify all AI or ML products that will be used as part of the study. *The goal is to identify risk of data leakage or use of AI tools that are not approved for use with the relevant data in this protocol.*
 - Product
 - Where product is deployed
 - Is the product approved for use with Sensitive Data
 - Will Sensitive Data be input
 - If approved for Sensitive Data, RSAM/OneTrust ID

IRB/Rascal AI Questions

Procedures

- Will a system be created as part of this protocol?

System definition:

A System is any computer or electronic tool developed as part of the study. This can include computer programs, websites, apps, or devices that collect or use information.

A System can run on a single server, multiple servers, cloud-based infrastructure, local computing environments, embedded hardware, or end-user devices.

The words System, Application, and Information System all mean the same thing.

IRB/Rascal AI Questions

Procedures

- Are any parts of the research activities aimed at developing or training an AI or ML model?
[Note: Prompts and/or Instruction sets would be considered training]
 - [Y] Are there plans to share the model, the prompts, and/or the instruction sets with entities external to the institution?
 - [Y] The following text appears: Please select 'Yes' to 'Future Use and/or Sharing' and complete the generated page

IRB/Rascal AI Questions

Future Use and/or Sharing of Data and/or Specimen

- Will data, **AI or statistical models** and/or specimens be shared or retained for future use (e.g. beyond the current study)?
 - [Y] Future Use

*For what materials do you anticipate future research use? (Select all that apply.)

Data
 Biological Specimens

*Please indicate how data and/or specimens will be retained for future use: (Select all that apply.)

Some or all data and/or specimens, as applicable, will be retained by Columbia researchers for future use.

*How are the *materials* intended to be used for research in the future? [?](#)

Current PI will retain the materials and there is no intent to create a repository or share with other CU researchers. Note: Information provided in original consent forms will be considered when an addition of future uses is submitted via modification.

Multiple researchers, which may include the current PI and research team, will be able to request use of the materials.

*How will the data and/or specimens, as applicable, be labeled during storage for future uses.

In the same manner as during collection (e.g., with direct identifiers, coded, de-identified, anonymous) [?](#)

In a different manner than during collection

*Describe the physical storage for the specimens/data, including location. [?](#)

In the same manner as during collection

In a different manner than during collection

*Describe who will have access to the stored data and/or specimens.

Some or all data/specimens will be released to a non-Columbia entity for future use and Columbia researchers will not have direct control.

*Indicate to whom the data/specimens will be released

Sponsor
 Non-Columbia repository
 Other

*Describe plans for release of data and/or specimens. [?](#)

IRB/Rascal AI Questions

Future Use and/or Sharing of Data and/or Specimen

- Will data, AI or statistical models and/or specimens (“Materials”) be shared with any external parties as part of the current study (i.e., not for future use)?

Note: If you plan to share an AI model with entities external to the institution, please select ‘Yes’ in response to this question.

- [Y]
 - Please describe who will receive the Materials and the method by which they will be shared: [Open Text field]
 - If Materials are shared now or in the future, what types of identifiers will be disclosed? (Select all that apply.)
 - Fully identifiable (e.g., names, contact info, full dates, MRNs)
 - Coded (identifiers replaced with codes, and link is included)
 - Coded (identifiers replaced with codes, but link retained by the study team)
 - De-identified (no direct identifiers, no code link retained by the study team)

IRB/Rascal AI Questions

Privacy & Data Security

Provide a description of how the confidentiality of study data will be ensured, addressing concerns or protections that specifically relate to the data storage elements identified above (e.g. hard copy, electronic, system, and/or endpoint), **as well as potential data transmission to external entities (e.g. plugins that interface with cloud resources).**

AIWG/AIGC Review Dimensions

4 Primary Dimension of Review

- Compliance/Regulatory Risk
- Technical Security
- Financial
- Technical Support

Ways to engage

- Knowledge: [CUIMC IT Forum](#)
- New Projects/Tools: [IT PMO Request Form](#)
- General Questions: 5help@cumc.columbia.edu

Questions?

?’s?